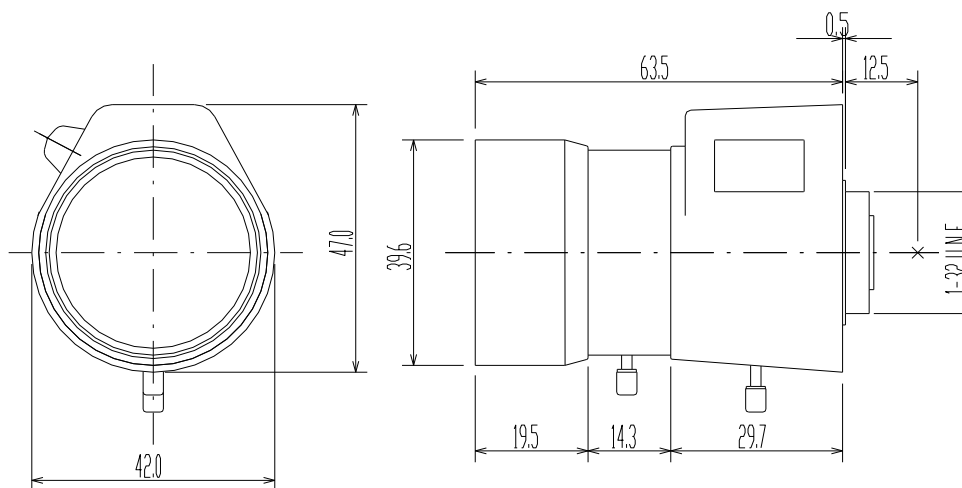


Type	AI VARI	Mount	CS	
Focal Length	7~50mm	Back Focus		
Fno.	F1.6	Mechanical Bf		
Designed Image Format	1/2.7" (ϕ 6.75mm)	Exit Pupil		
Operation Range	Iris	F1.6-T360	Filter Size	
	Focus	1.0m~ ∞	Aperture	
	Zoom	7~50mm		Front Rear
Control	Iris	DC Galvanometer	Dimension	
	Focus	Manual with Lock		42(W)x47(H)x64(L)mm
	Zoom	Manual with Lock	Weight	125g
	ICR	-		
Object Size at MOD	Wide			
	Tele			
Field of View	D	50.5° ~ 7.5°	46.4° ~ 6.9°	
	H	1/2.7" 41.3° ~ 6.0°	1/3" 37.8° ~ 5.5°	
	V	31.6° ~ 4.5°	28.8° ~ 4.1°	
Control	Iris	Focus	Zoom	
Driving Coil/Supply Volt	190 Ω	-	-	
Damping Coil/Current	465 Ω	-	-	
Response Time	-	-	-	
Potentiometer	-	-	-	
Light Measuring Method	-			
Input Signal	-			
Iris Accuracy	-			
Sensitivity Adjustment	-			
Operating Temperature	-10°C ~ +50°C			

DIMENSIONS



Wiring Diagram

4 Pin Standard Connector for Auto Iris

Pin No. 1	Damping (-)
Pin No. 2	Damping (+)
Pin No. 3	Driving (+)
Pin No. 4	Driving (-)

